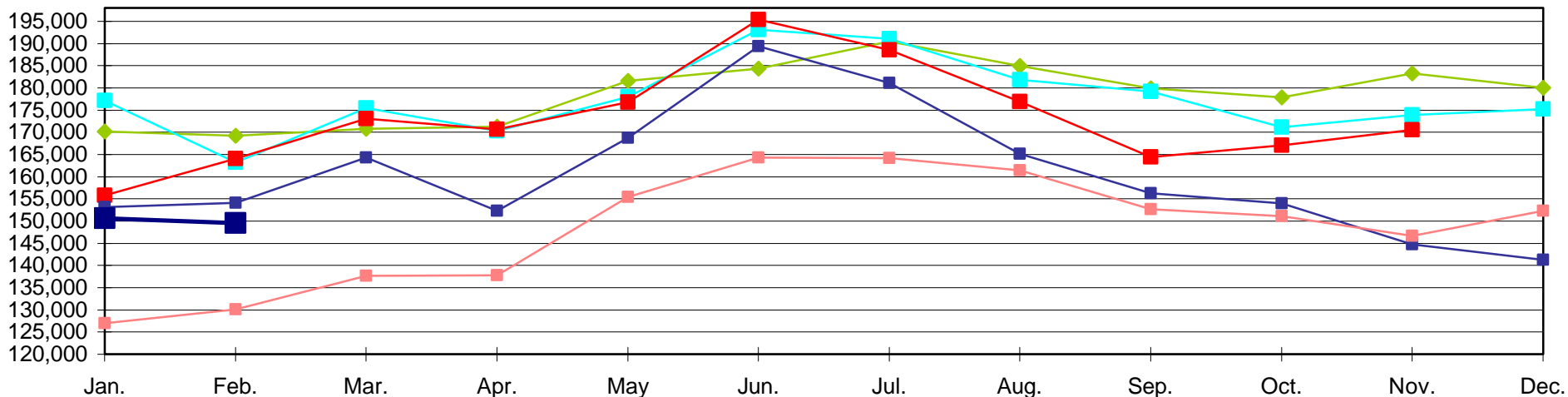
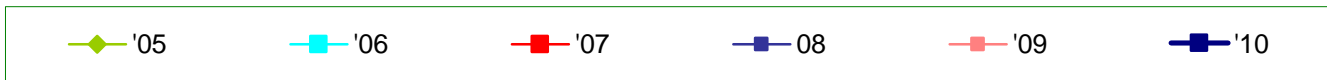
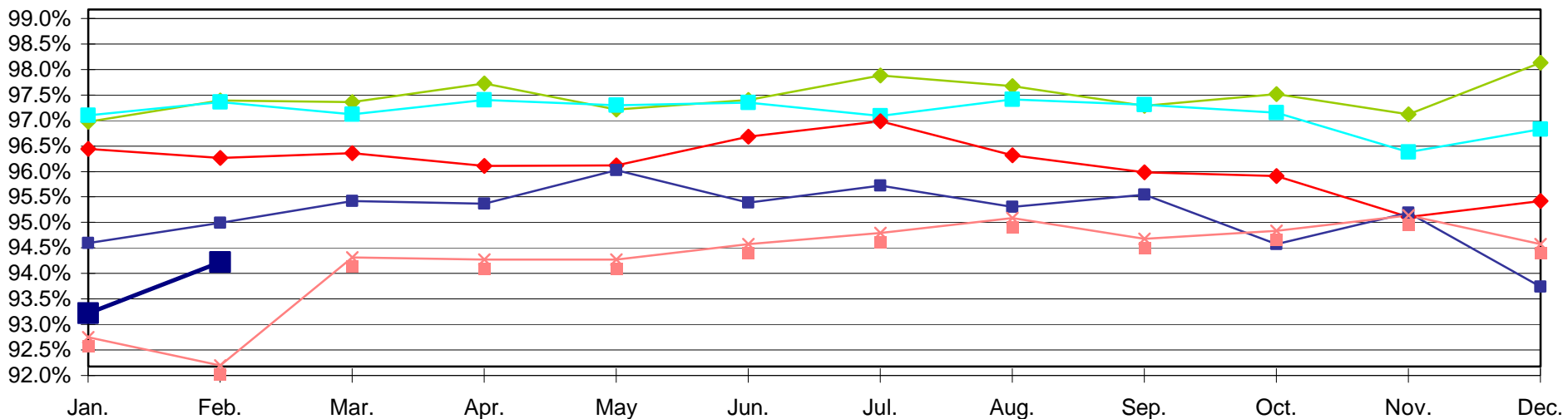
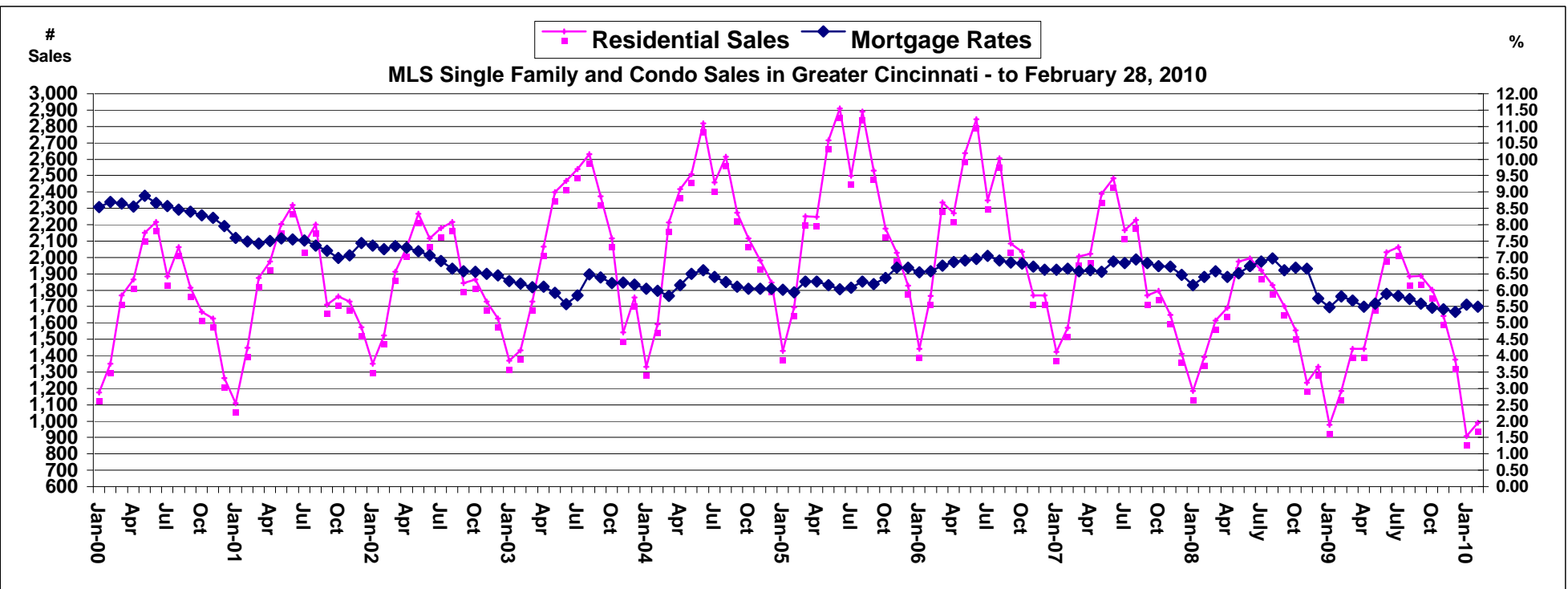
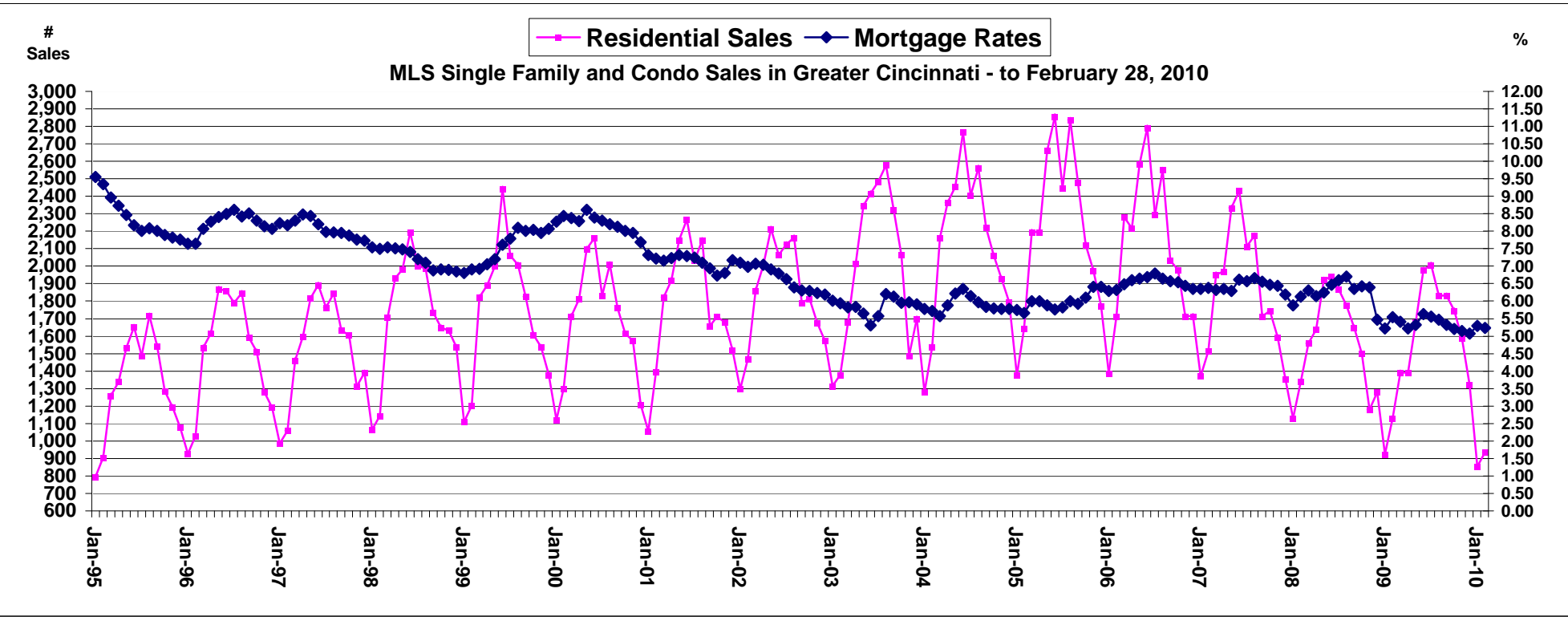


2005 to 2010 Home Sales Average Price (w/Condos)

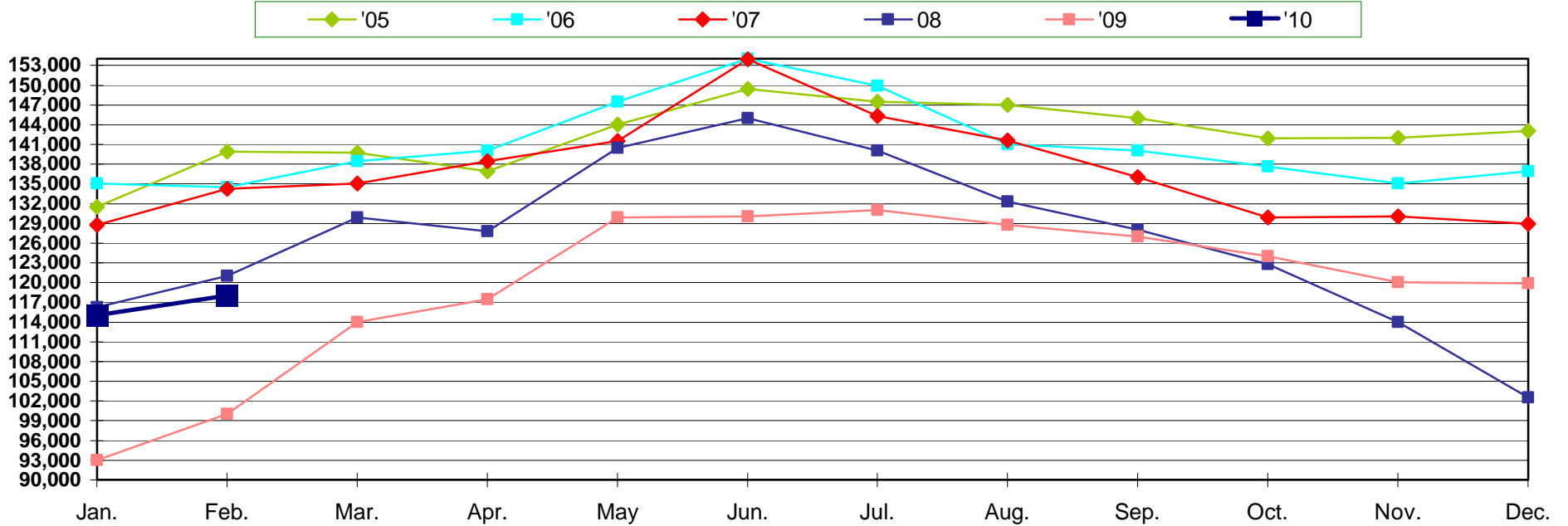


2005 to 2010 Home Sales - Average SP / LP % (w/Condos)

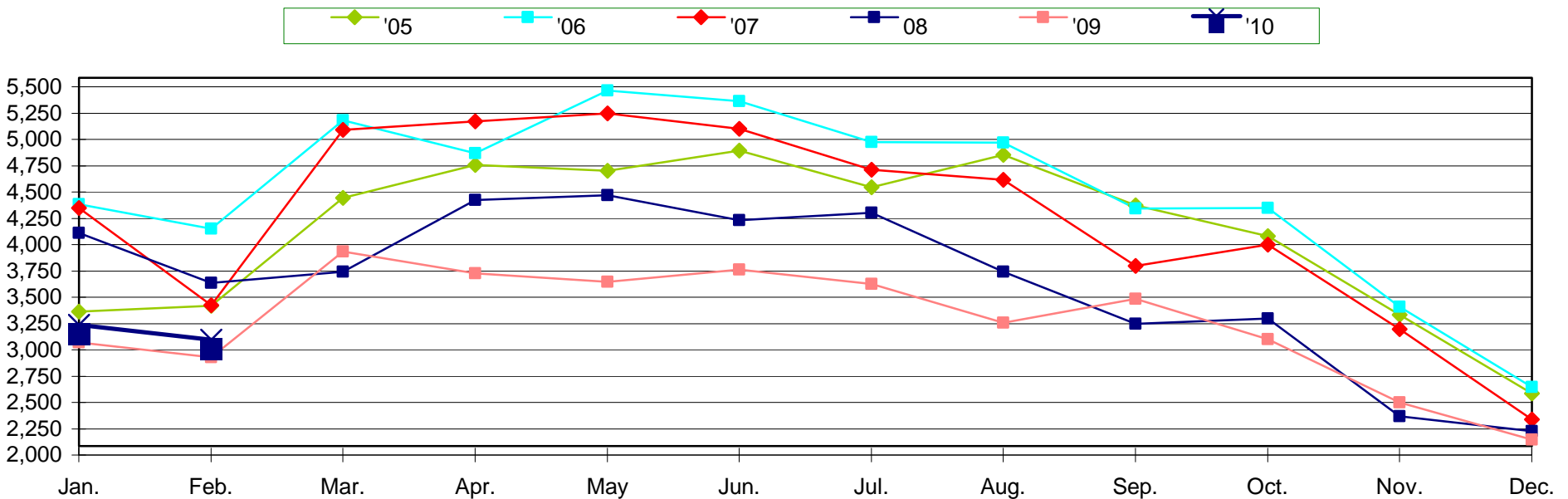




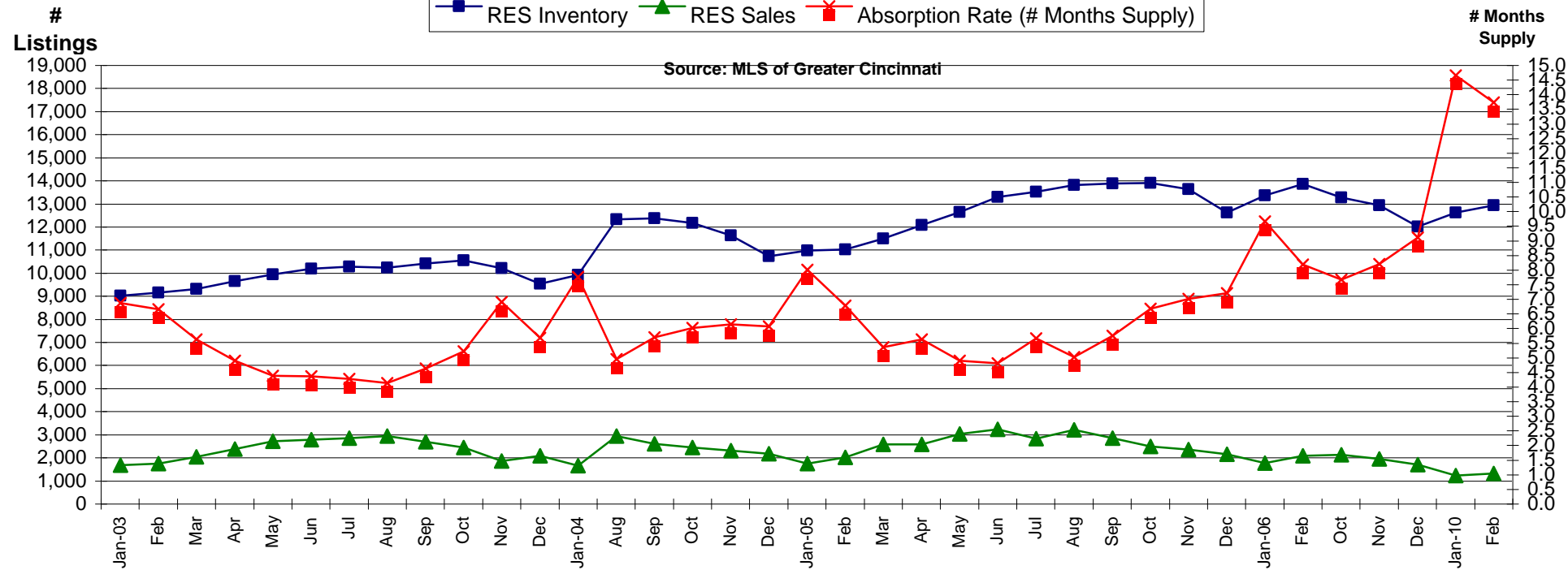
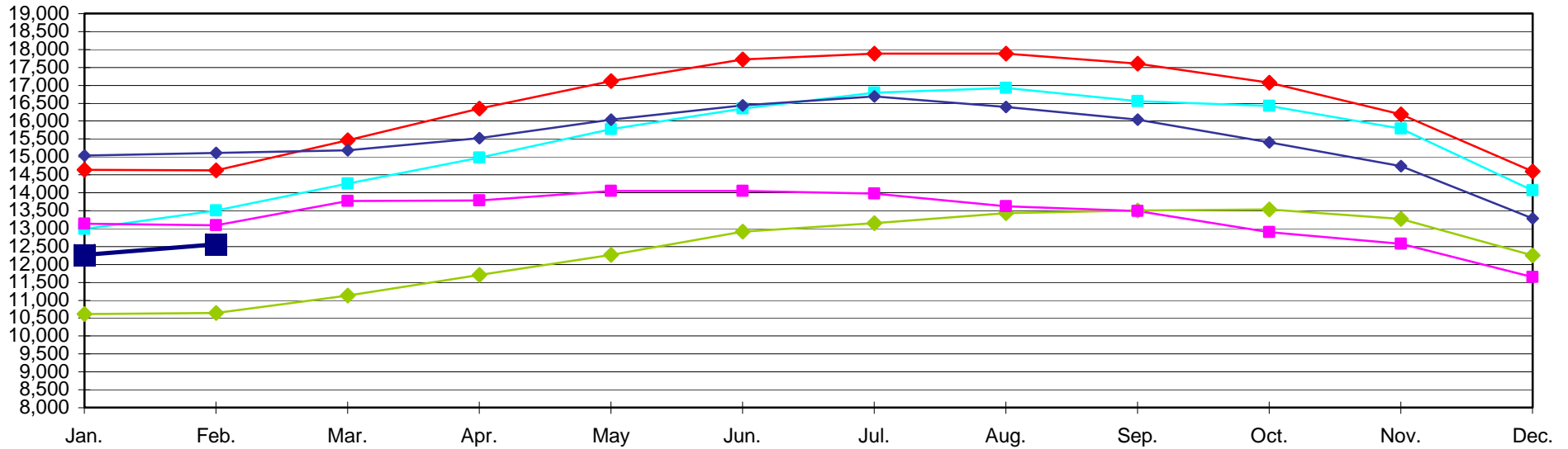
2005 to 2010 Home Sales - "Median Price" (w/Condos)

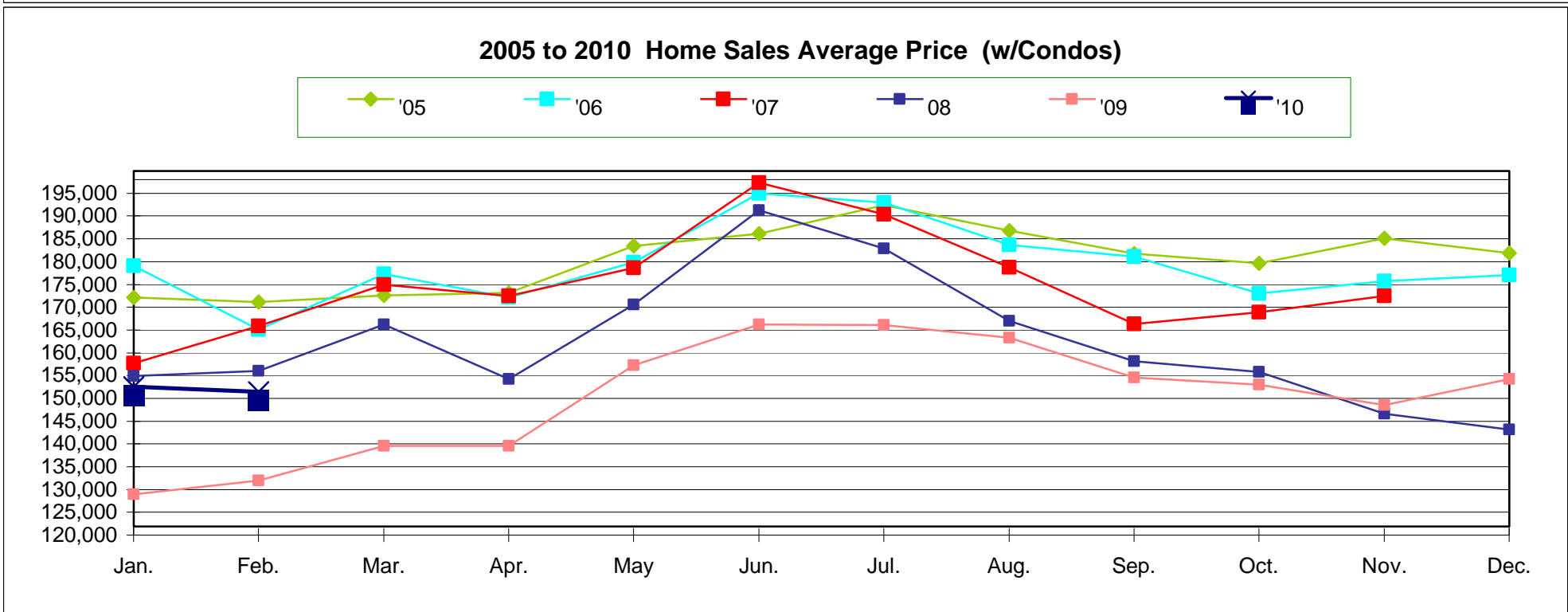
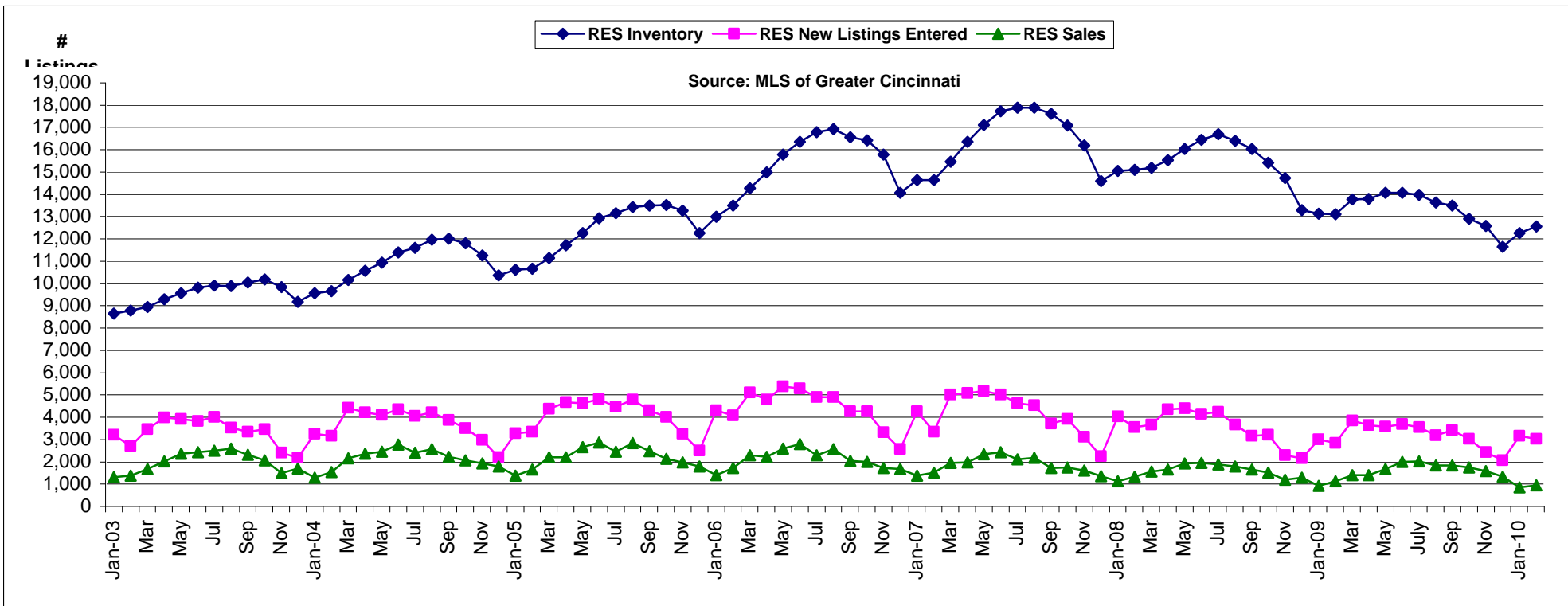


2005 to 2010 Residential New Listings Entered (w/Condos)

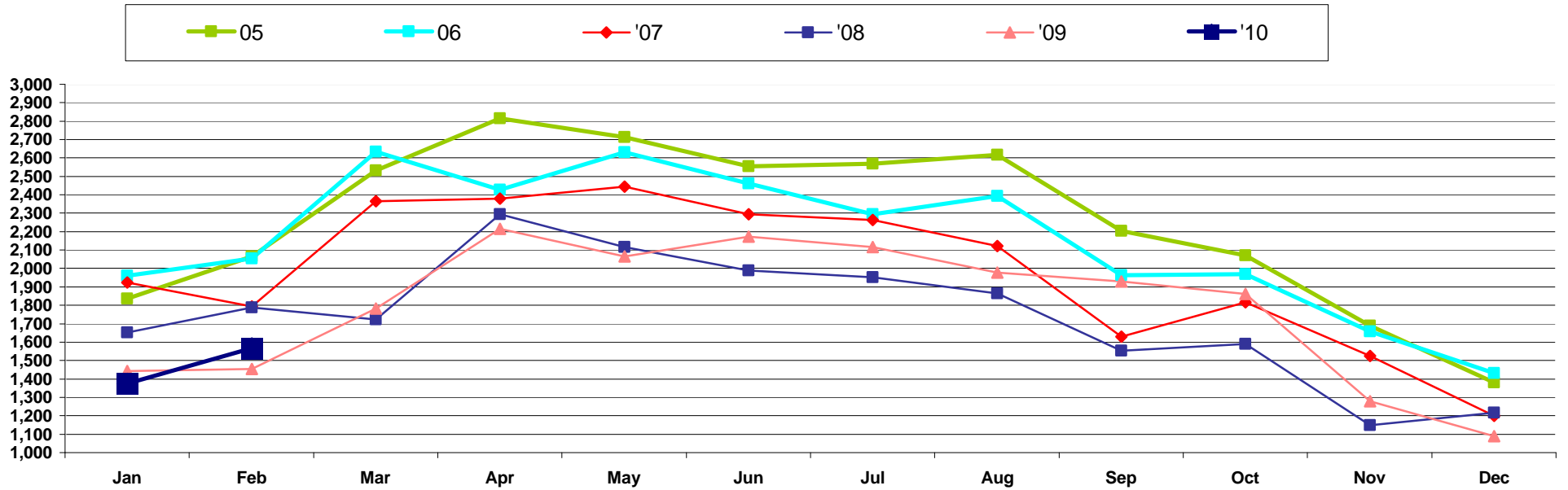


2005 to 2010 Residential Inventory (w/Condos)

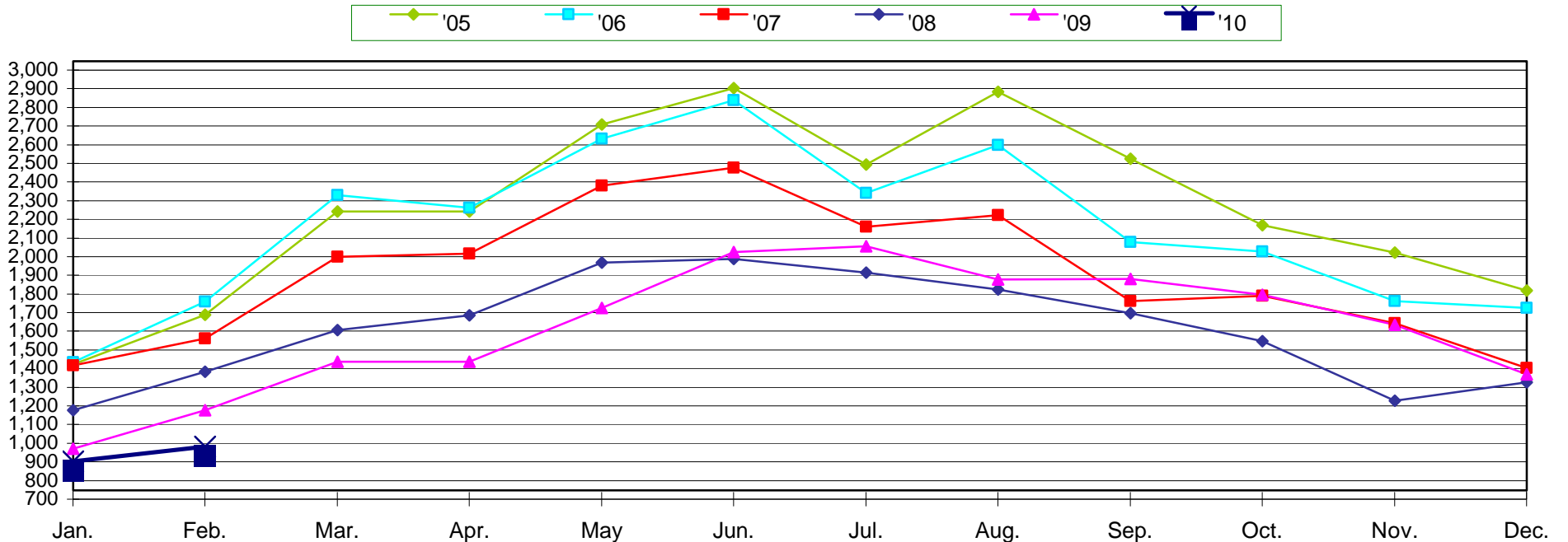




New Pending - Single Family & Condo - New and Existing



2005 to 2010 Existing & New Home Sales (w/Condos)



Absorption Rate = Cincinnati Closed Sales to "Cincinnati" Inventory Ratios

January 2003 through February 2010

Source: MLS of Greater Cincinnati

